

# Product Specifications

**NAME: wireless DMX controller**



## Summarization

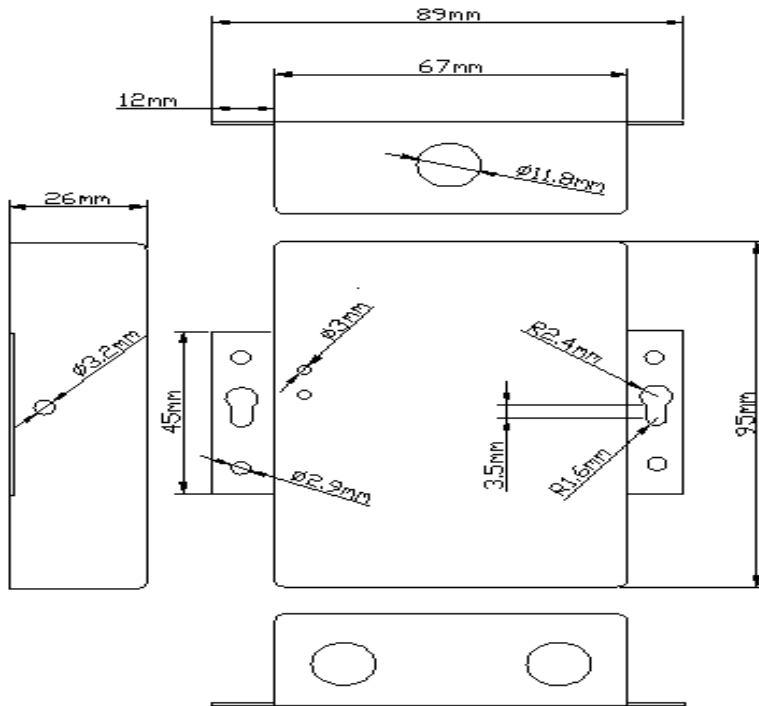
RF controller adopts the advanced micro control unit, it is used for controlling a variety of lamp whose source of light is LED. For instance, point source of light, flexible light strip, and whose light system is composed of switching power supply. At the same time, it has many advantages such as convenient connection, simplicity to use and others. According to the actual need of customers, it can carry out jumpy changing, gradual changing, stroboflash and other effects of change.

## Technical parameters

- Working temperature: -20-60 °C
- Supply voltage: DC5V, 12V, 18V, 24V <optional> (for orders specify voltage)
- Output: 3 channels
- Connecting mode: common anode
- External dimension: L95 X W67 X H26 mm
- Package Size: L145X W95 X H50 mm
- Net weight: 265g
- Gross weight: 295g
- Static power consumption: <1 W
- Output current: <4 A (each channel )
- Output power: 5 V: <60W, 12V: <144W, 24V: <288W

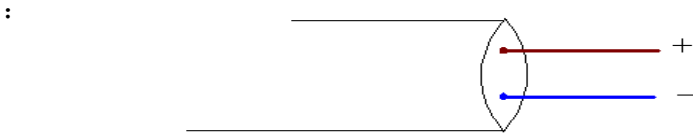
# Product Specifications

## External Dimension



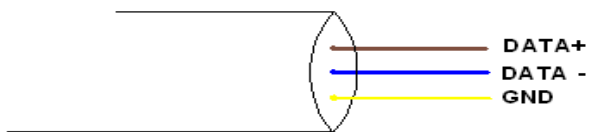
## Interface Specifications

Power input interface:



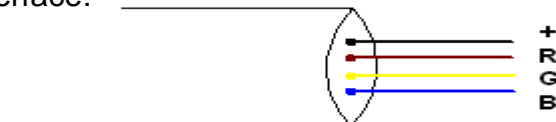
Adopt two sheath wires as connecting wires, meanwhile, **brown wire** → + **blue wire** → -

DMX signal output:



Adopt three sheath wires as connecting wires, meanwhile, **brown wire** → DATA+ **blue wire** → DATA-  
**yellow** → GND

Load output interface:



Adopt four sheath wires as connecting wires, meanwhile, **black wire** → + **brown wire** → R  
**yellow wire** → G **blue wire** → B

## Direction for use

# Product Specifications

- 1、 Connect the load wire at first, following by the power wire; **Please ensure short circuit can not occur between connecting wire before you turn on the power:**
- 2、 Adopt RF control,there are four keys altogether, and every key-press function as follows:
  - Program:** pattern key,lighting color will change if you press one time;
  - Speed up:** to speed up lighting color changing;
  - Speed down:** to speed up lighting color changing;
  - On/off:** Power switch,you could turn on/off controller in any state.
- 3、 DMX digital console:

The DMX controller address code corresponding to the channel for the red (R), address +1 code corresponding to the channel for the green(G), address+2 code corresponding to the channel for the blue (B), For example, the address code+1, CH1 controll of red(R) color, CH2 controll of green(R) color, CH3 controll of blue(B) color, The DMX channel vale (0-255) greater, the brightness will be more higher. It have 256gray-scale arbitray modulation, and can achieve the purpose of mixes light. The acquiesce DMX code address is CH1, you can buy the DMX address editor of us to modify the address you may want.

- 4、 Standard color changes as follows:

| Items | Patterns         | Remarks                          |
|-------|------------------|----------------------------------|
| 1     | Static red       |                                  |
| 2     | Static blue      |                                  |
| 3     | Static purple    |                                  |
| 4     | Static green     |                                  |
| 5     | Static yellow    |                                  |
| 6     | Static cyan      |                                  |
| 7     | Static white     |                                  |
| 8     | jumpy changing   | 2(B) and 3(C) keys are available |
| 10    | gradual changing | 2(B) and 3(C) keys are available |

## Typical Applications (next page)

