

IP68LED Strip

IP68 LED STRIP is a combination of SMD LEDs and extrusion technology. The SMD (Surface Mounted Diode) print the print plate on which the LEDs have been assembled directly-has been enveloped with a transparent,UV/IR-protected PVC housing. The result is a high-quality product with which you can create colorful and amazing linear light accents.It is a very efficient and multi-purpose solution for various architectural in- and outdoor applications.

★ Features

- ※ Flexible linear lighting
- ※ Very clear SMD LEDs,designed for free cutting every 6 LEDs
- ※ Low energy consumption and high light yield
- ※ Protected against humidity: IP68
- ※ No maintenance and durable
- ※ Long extension leads
- ※ Possibilities to shorten, connect and roll, user can use DIY accessories for easy connection of cutting sections
- ※ Extremely functional and multi-purpose,UV resistant,suitable for outdoor and indoor application
- ※ Much brighter than normal rope light
- ※ Dimmable
- ※ Accessories included

✓ Great advantages

- ※ eco friendly
- ※ long life span,standard warranty 3 years
- ※ complete cut / connection accessories
- ※ no need of constant-current power feed
- ※ low power consumption
- ※ custom packing

🔧 Applications

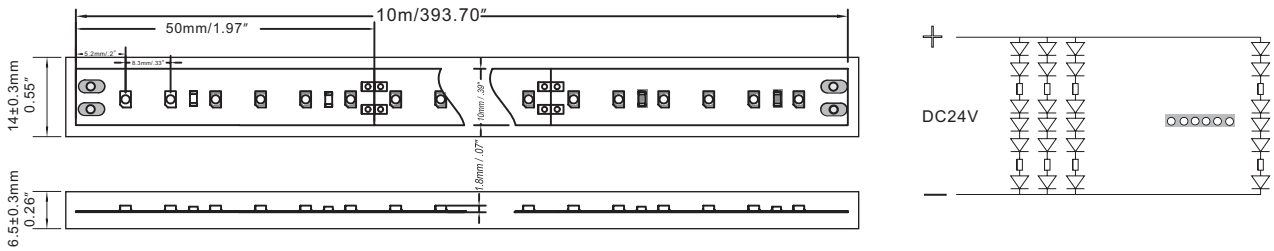


I-W/WW-24V



- ※ Linear pool light
- ※ Architectural lights for canopy,corridor, window,archway
- ※ Backlight or edge lighting for signage
- ※ DIY lights for home use
- ※ Path and contour marking
- ※ Decorative lights for holiday,event,show, exhibition

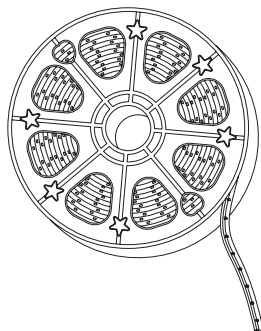
Dimensions



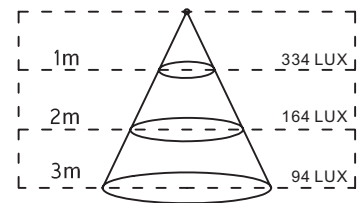
Specifications

Model #	Color	LED Q'ty/m	LED Type	Light Output (mcd/m)	Light Output (lumen/m)	Beam Angle (degrees)	Voltage (V DC)	Current (Amps/m)	Power(W/m)	Max.Connection length(m)
I-W-24V	White	120	Power SMD TOP LED	3500x120	1022	120	24	0.8	19.2	10
I-WW-24V	Warm White	120	Power SMD TOP LED	3000x120	775	120	24	0.8	19.2	10

Standard packing:30m per spool.

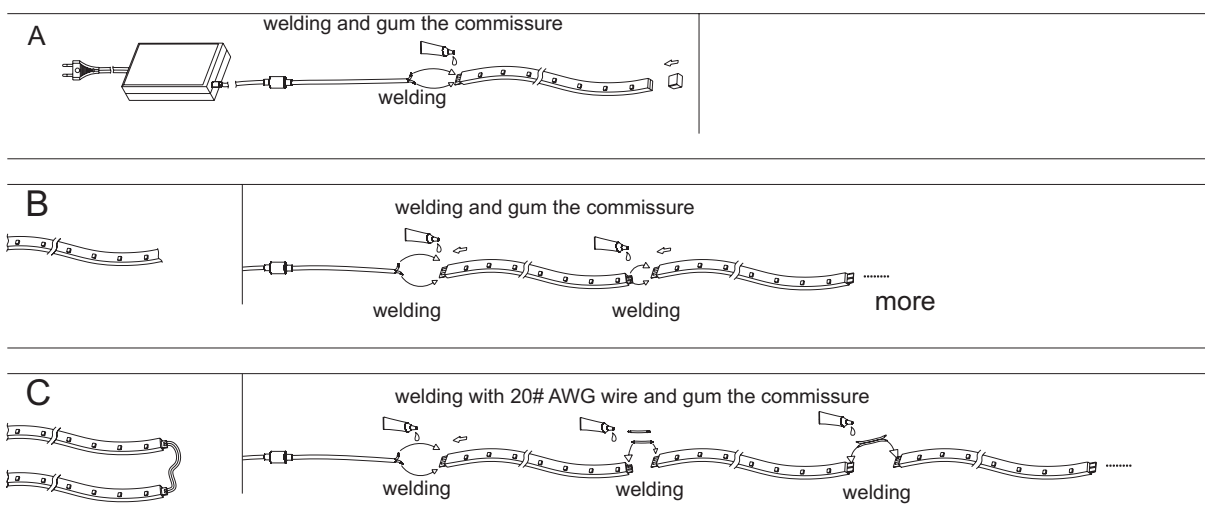


(A1)	(A6)	(A7)	
Model number	(A1)	(A6)	(A7)
Item name	mounting clip	silicon end cap	silicon gel
Q'ty per reel (pcs)	120	10	1
Descriptions	for IP68 Flexmond™		

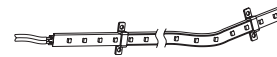
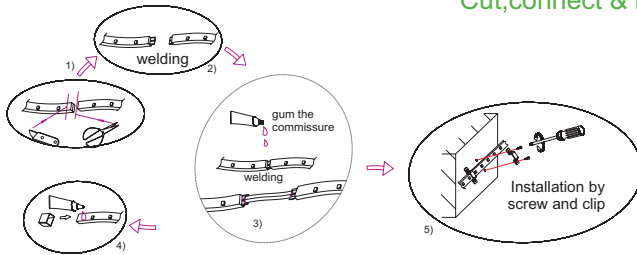


500mm/20" Luminance(white 6500K)

Link options



Cut, connect & installation



- 1) Use scissors to cut along the mark lines on PCB
- 2) Use a knife to weed the PVC encapsulation around the PCB end. Caution should be taken not to scratch the copper circuit.
- 3) Welding (with 22#AWG wire) and gum the commissure
- 4) Seal the strip with an end cap and silicon gel
- 5) Install the BID strip use bracket



Safety Information

- The strip itself and all its components may not be mechanically stressed.
- Assembly must not damage or destroy conducting paths on the circuit board.
- Installation of LED ribbon (with power supplies) needs to be made with regard to all applicable electrical and safety standards. Only qualified personnel should be allowed to perform installations.
- Correct electrical polarity needs to be observed. Wrong polarity may destroy the strip.
- Parallel connection is highly recommended as safe electrical operation mode.
- Serial connection is not recommended. Unbalanced voltage drop can cause hazardous overload and damage the strip.
- Please ensure that the power supply is of adapters power to operate the total load.
- When mounting on metallic or otherwise conductive surfaces, there needs to be an electrical isolation points between strip and the mounting surface.
- Pay attention to standard ESD precautions when installing the strip.
- Damaged by corrosion will not be honored as a materials defect claim. It is the user's responsibility to provide suitable protection against corrosive agents such as moisture and condensation and other harmful elements.
- Do not power more than 10m of IP68 LED strip with merely a power supply. Otherwise the brightness will decay. Max. 10m is recommended to be powered separately.
- Caution needs to be taken while doing the connection after cutting the strip. Only authorized professionals can do the work to enable it waterproof in wet locations.

IP68



DC
24V



RoHS
COMPLIANT

warranty 3 years